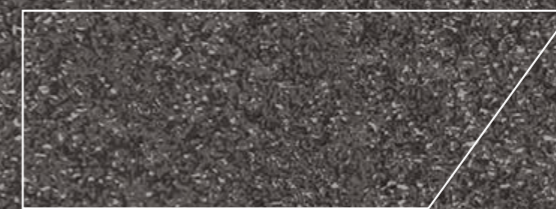


FORGE
SERIES

MOZILLA
EXQUISITE SURFACES

Crafting
Nature's Beauty
Beneath
Your Feet.



600x1200mm

WHO WE ARE?

COMBINING THE DIVERSE STRENGTHS OF THE MOZILLA & GROUP OF COMPANIES TO CREATE NEW VALUES.

Mozilla Granito places top priority to the principle of making lives better to ensure that the products we manufacture consistently delight people. We also strive to create new horizons by continue improving our manufacturing capabilities and management resources within the Mozilla Group. With deep understanding of current architectural demands, technology and strong expertise in tiles business,

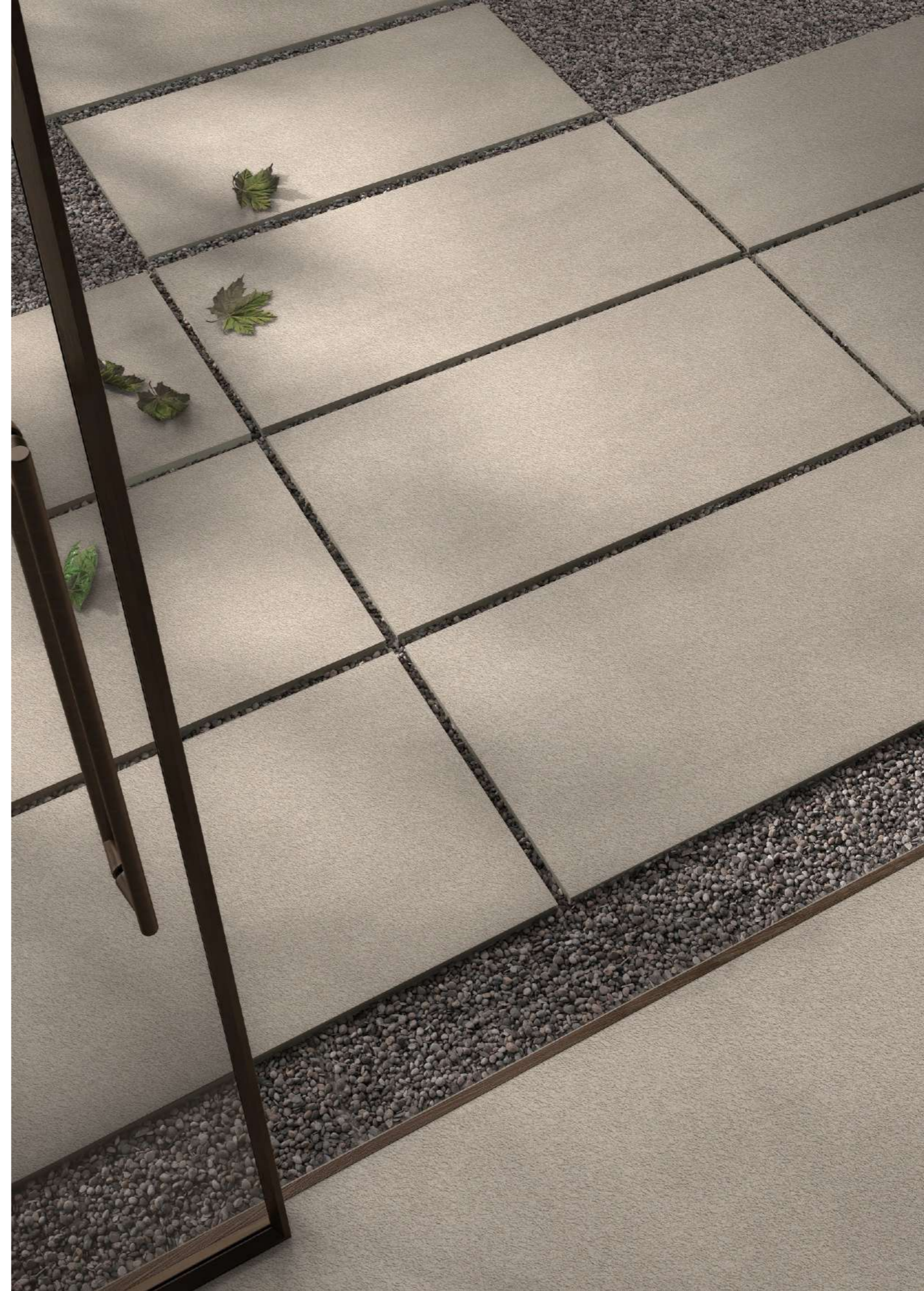
We implement high-end machineries to create the best slabs in the market, with the highly advanced features like Non-absorbent, Resistant to liquids and acids, Resistant to thermal shock, Non- toxic slabs that do not release micro-particles and many more



THE HARMONY BETWEEN SHAPES AND MATERIALS IS A REQUIREMENT OF HIGH-END INTERIOR DESIGN.

The Mozilla Granito LLP large-sized slabs are ideal for surfaces that demand maximum hygiene, strength, and aesthetic harmony. The wide range of Colors and Marble Texture allows Mozilla Granito surfaces to be used in residential contexts, such as the kitchen, living room, bathroom, bedroom, and commercial spaces, such as hotels, restaurants, offices, and stores.

The technical performance of porcelain tile and sophisticated aesthetics come together in large-sized slabs that create the impression of continuous and harmonious surfaces and spaces.



ONE SIZE
MANY POSSIBILITIES
MANY SURFACES

The Mozilla Granito LLP large-sized slabs are ideal for surfaces that demand maximum hygiene, strength and aesthetic harmony.

600x
1200mm

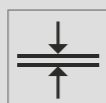
www.mozillagranito.com



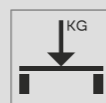
TECHNICAL FEATURE:



THERMAL SHOCKS RESISTANCE



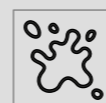
SURFACE FLATNESS



IMPACT RESISTANCE



ABRASION RESISTANCE



STAIN RESISTANT



CHEMICAL RESISTANT



FROST RESISTANT

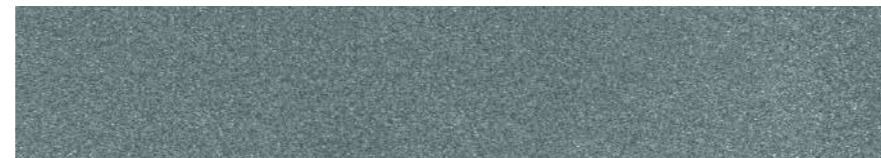


WATER ABSORPTION

LINE DIXIE



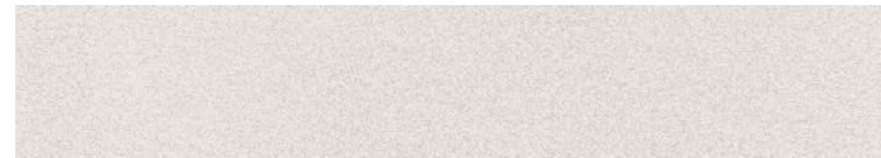
TOUCH ON THE
FINISH TO VIEW
THE PUNCH



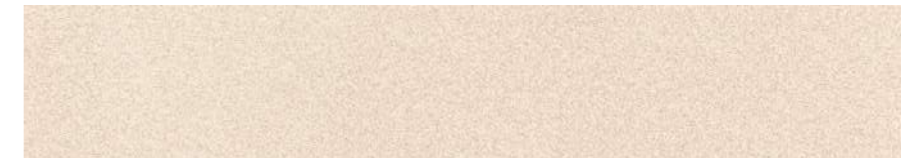
SANDSTONE AQUA



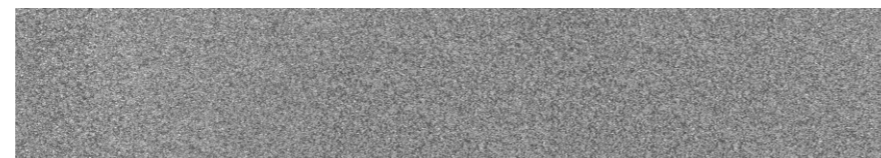
SANDSTONE VERDE



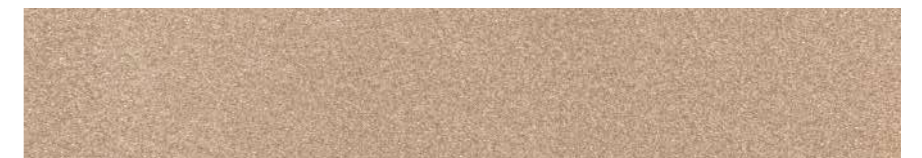
SANDSTONE BIANCO



SANDSTONE CREMA



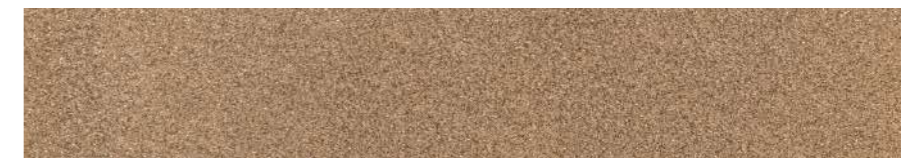
SANDSTONE GREY



SANDSTONE MIST



SANDSTONE BLACK



SANDSTONE NATURAL



SANDSTONE BLUE



SANDSTONE COFFE



SANDSTONE BURGANDY

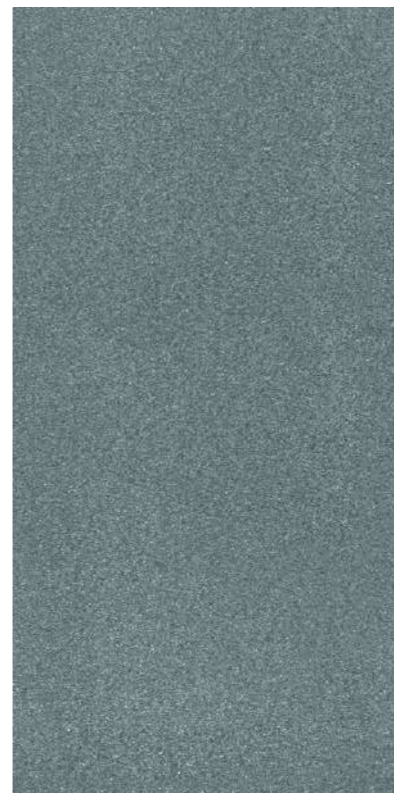


SANDSTONE RED

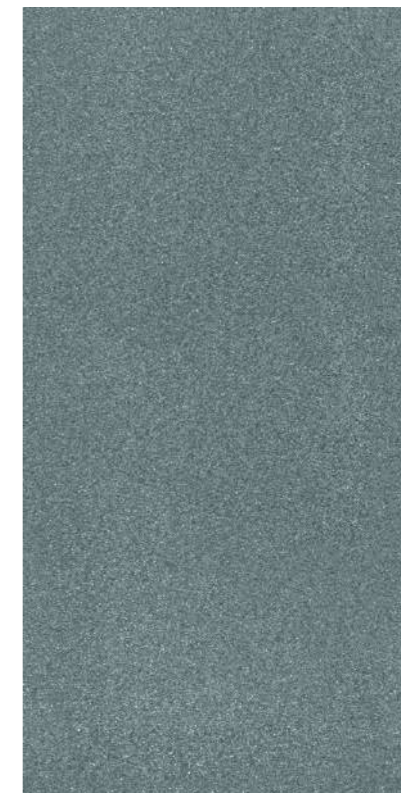




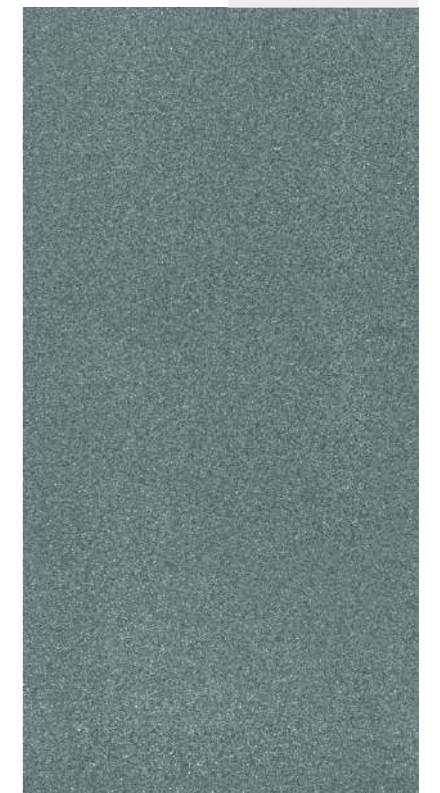
SANDSTONE AQUA



Size
600x1200mm



Finish
Matt with Forge effect



Thickness
9mm



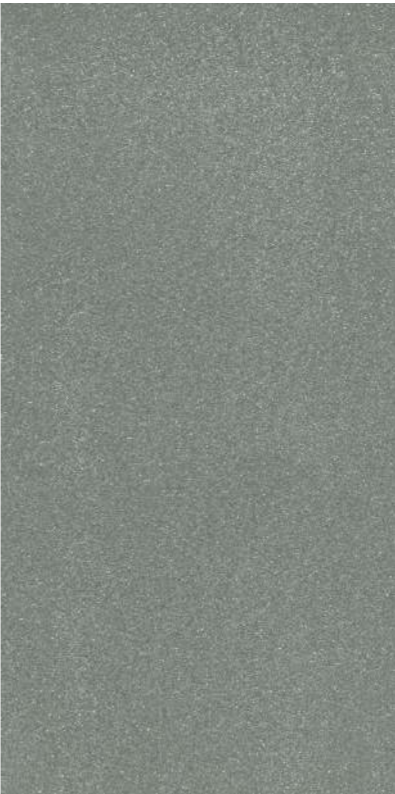
PREVIEW OF // SANDSTONE AQUA



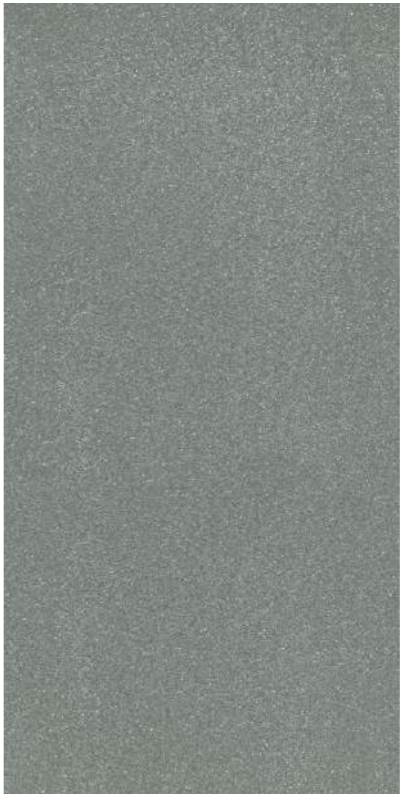
MOZILLA
EXQUISITE SURFACES



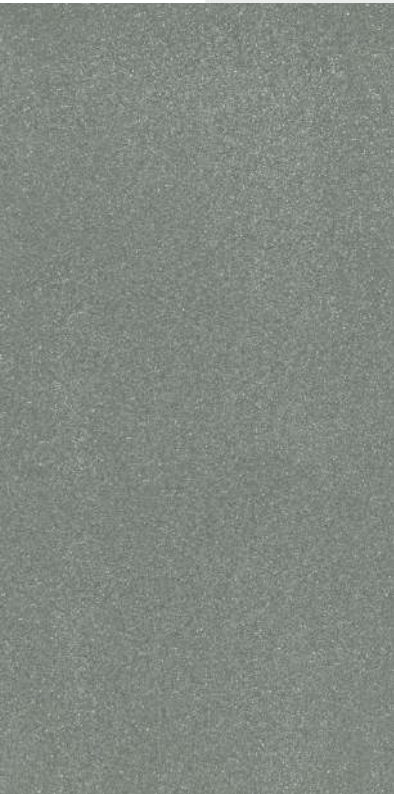
SANDSTONE VERDE



Size
600x1200mm



Finish
Matt with Forge effect



Thickness
9mm



PREVIEW OF // SANDSTONE VERDE



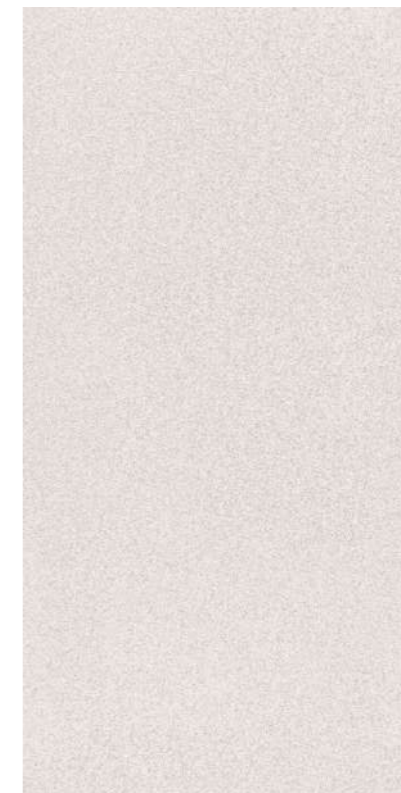
MOZILLA
EXQUISITE SURFACES



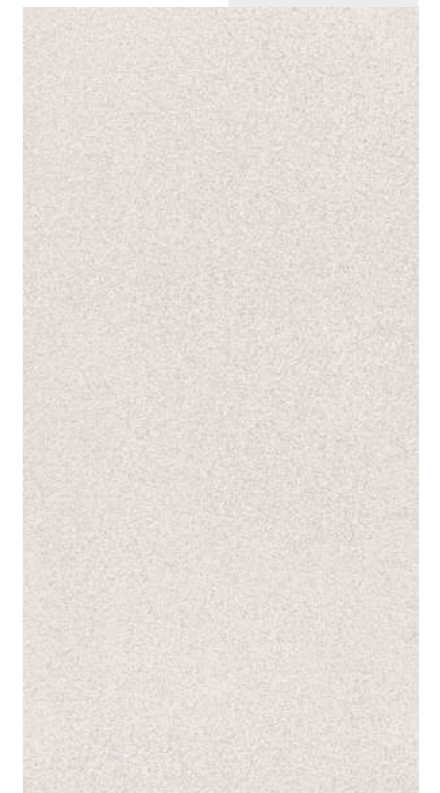
SANDSTONE BIANCO



Size
600x1200mm



Finish
Matt with Forge effect



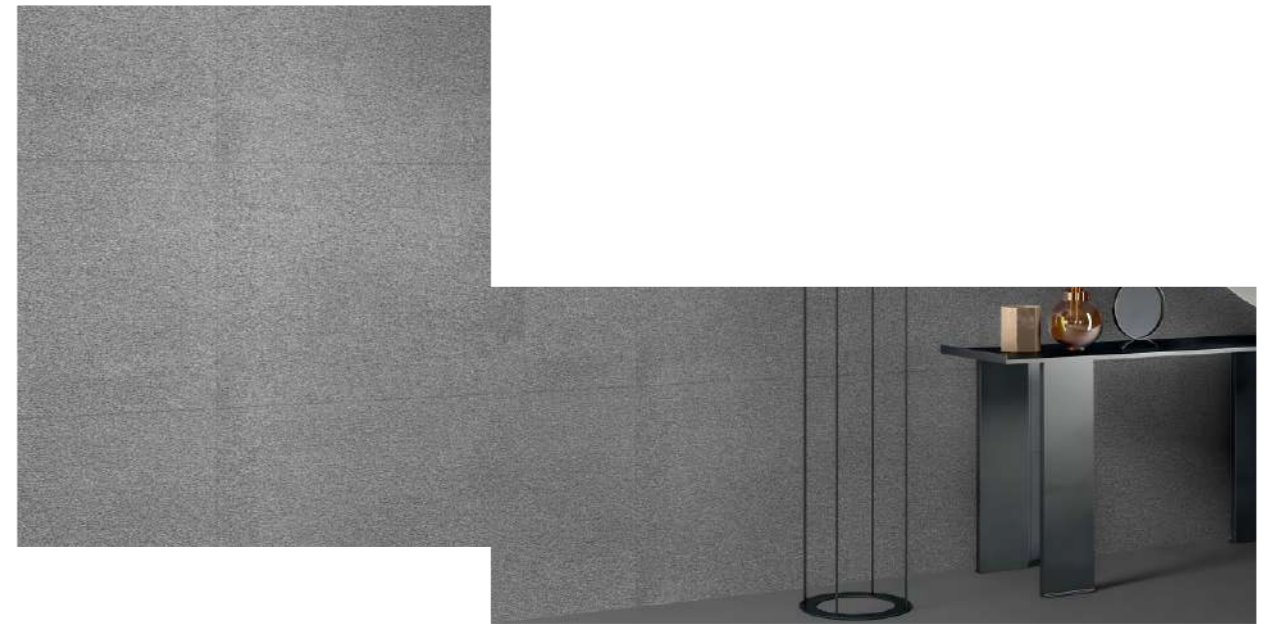
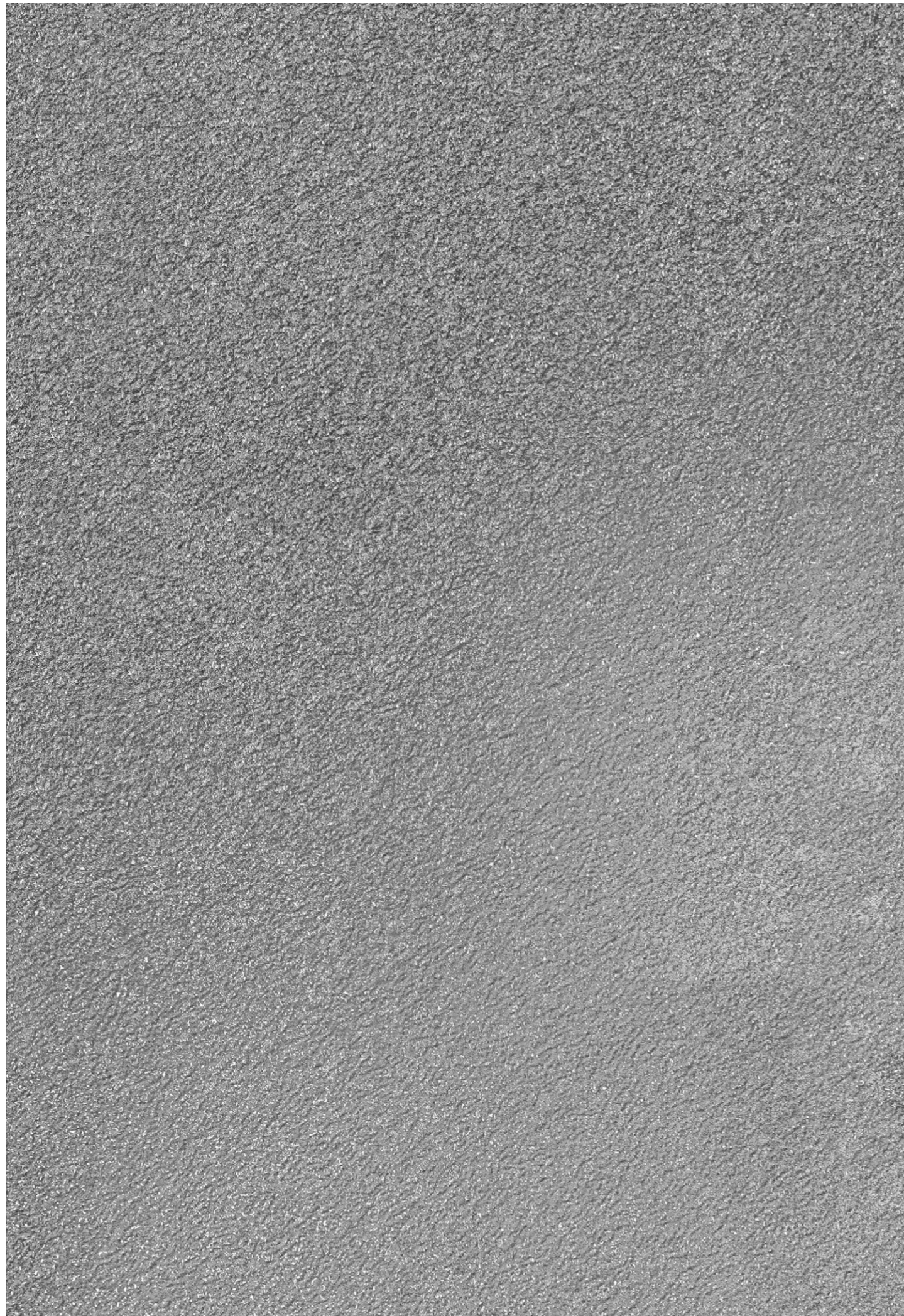
Thickness
9mm



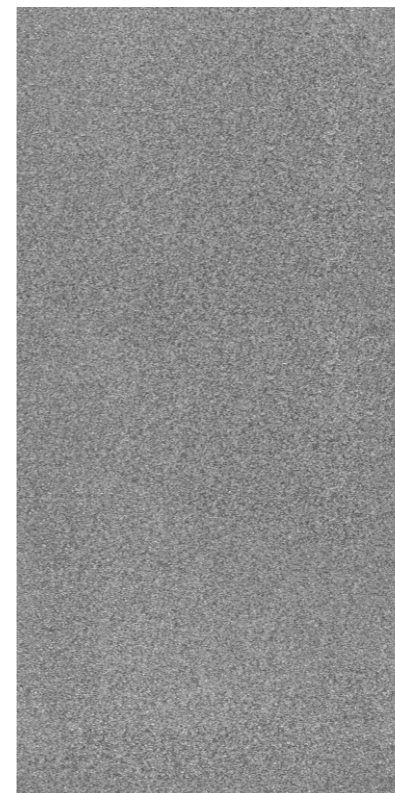
PREVIEW OF // SANDSTONE BIANCO



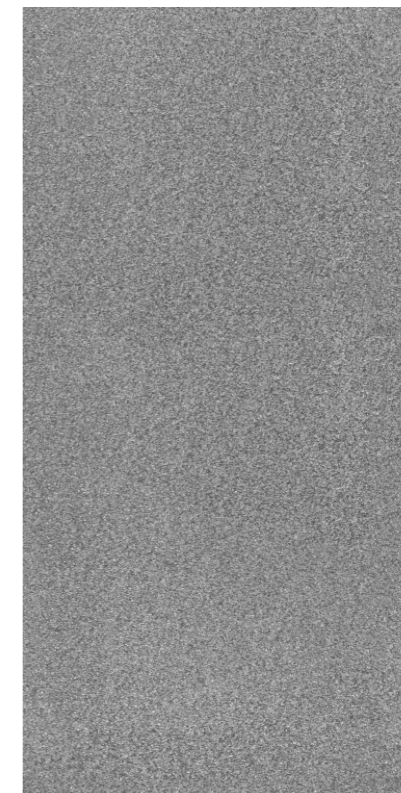
MOZILLA
EXQUISITE SURFACES



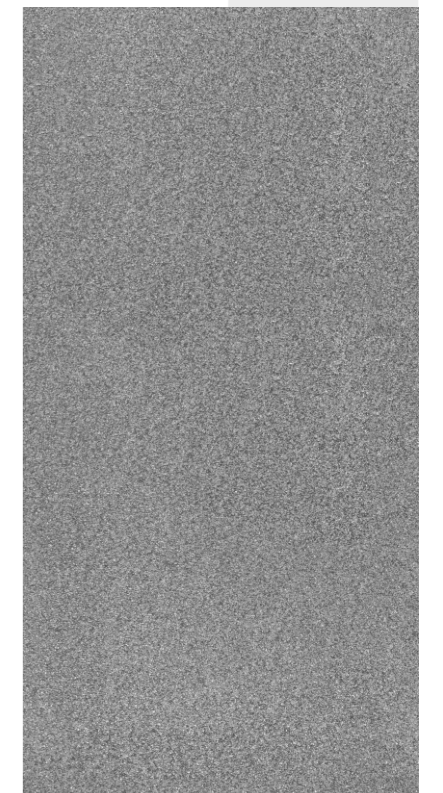
SANDSTONE GREY



Size
600x1200mm



Finish
Matt with Forge effect



Thickness
9mm



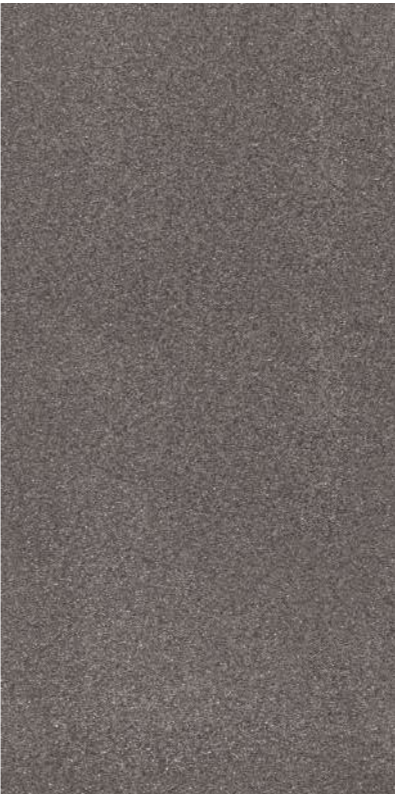
PREVIEW OF // SANDSTONE GREY



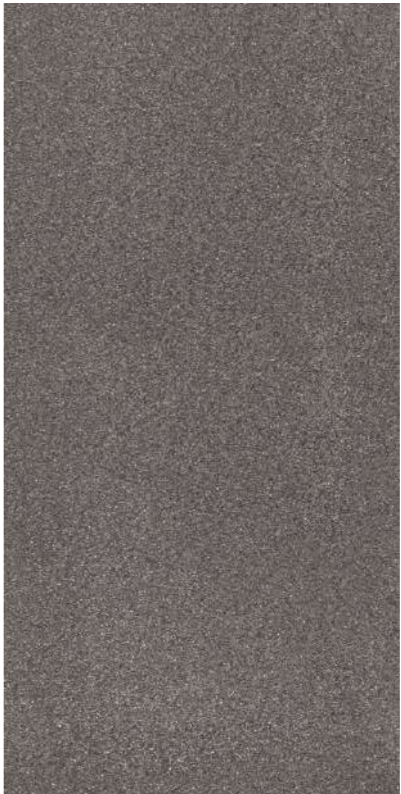
MOZILLA
EXQUISITE SURFACES



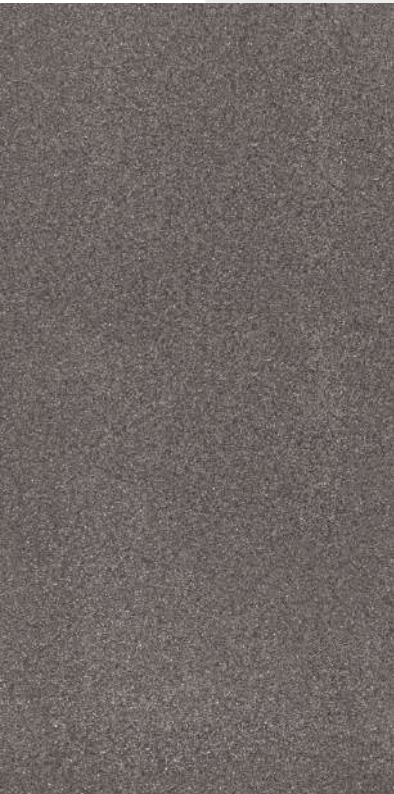
SANDSTONE BLACK



Size
600x1200mm



Finish
Matt with Forge effect



Thickness
9mm



PREVIEW OF // SANDSTONE BLACK



MOZILLA
EXQUISITE SURFACES



SANDSTONE CREMA



Size
600x1200mm



Finish
Matt with Forge effect



Thickness
9mm



PREVIEW OF // SANDSTONE CREMA



MOZILLA
EXQUISITE SURFACES



SANDSTONE MIST



Size
600x1200mm



Finish
Matt with Forge effect



Thickness
9mm



PREVIEW OF // SANDSTONE MIST



MOZILLA
EXQUISITE SURFACES



SANDSTONE NATURAL



Size
600x1200mm

Finish
Matt with Forge effect

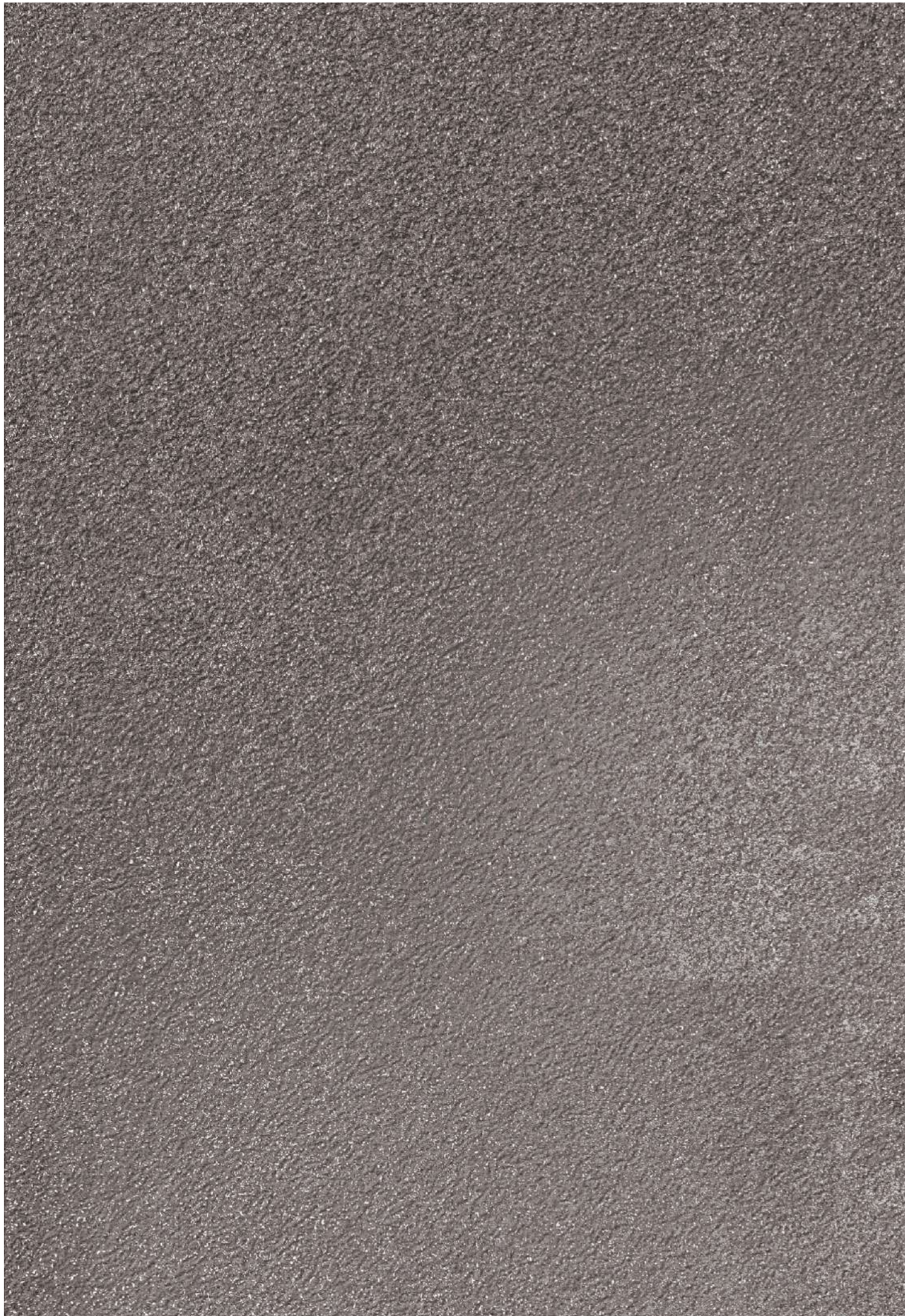
Thickness
9mm



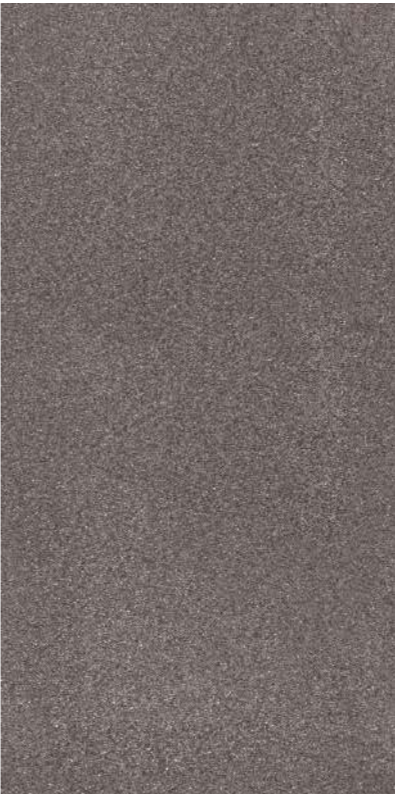
PREVIEW OF // SANDSTONE NATURAL



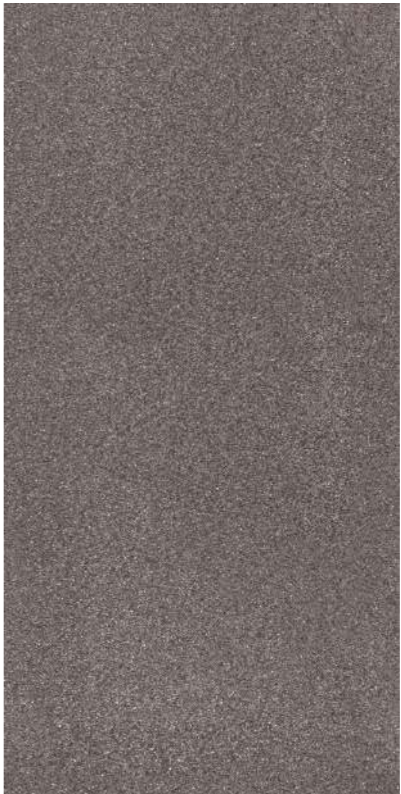
MOZILLA
EXQUISITE SURFACES



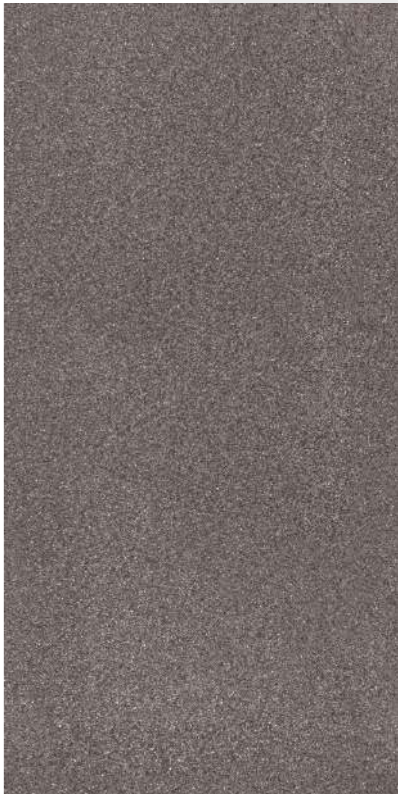
SANDSTONE COFFE



Size
600x1200mm



Finish
Matt with Forge effect



Thickness
9mm



PREVIEW OF // SANDSTONE COFFE



MOZILLA
EXQUISITE SURFACES



SANDSTONE BURGANDY



Size
600x1200mm



Finish
Matt with Forge effect



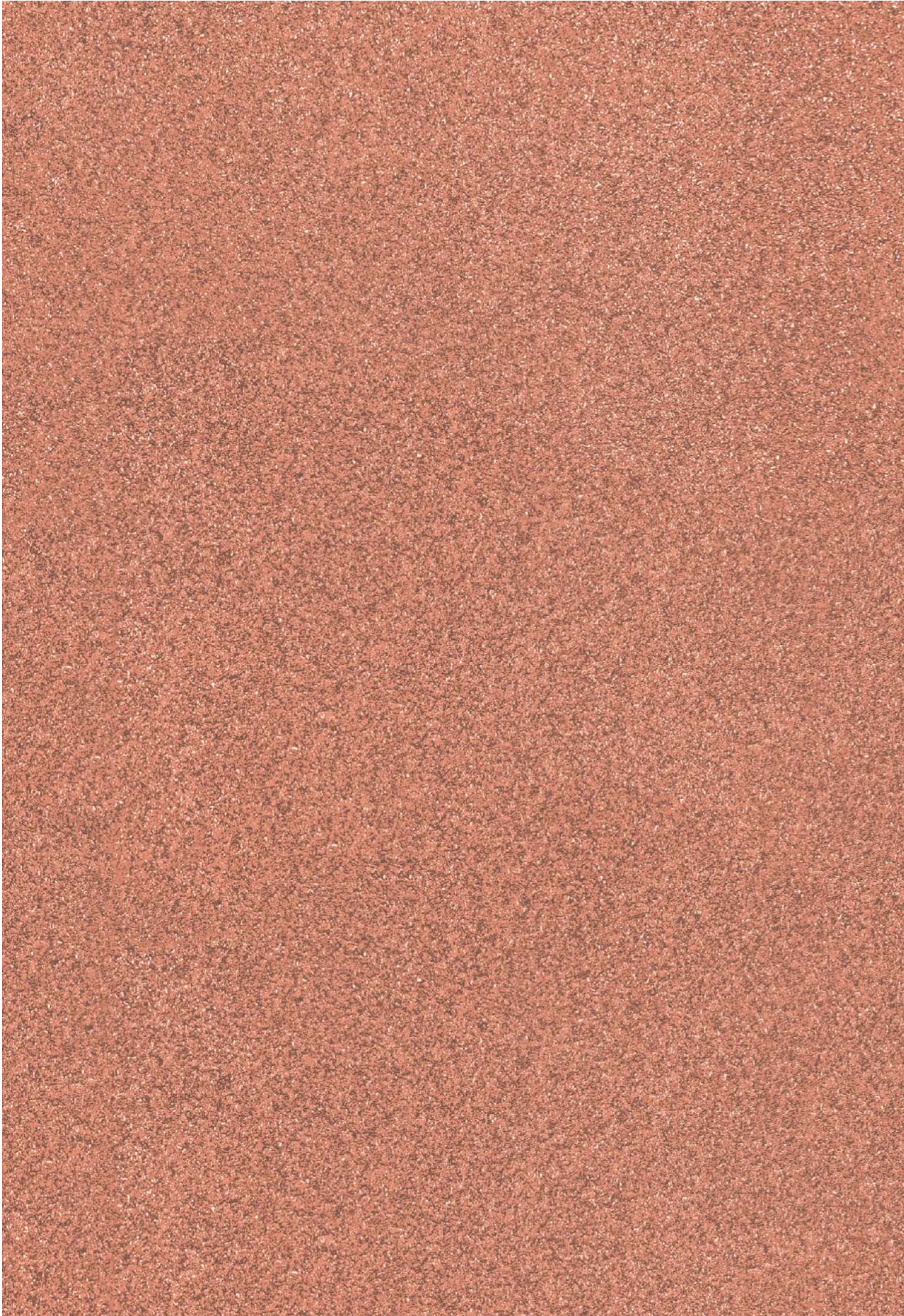
Thickness
9mm



PREVIEW OF // SANDSTONE BURGANDY



MOZILLA
EXQUISITE SURFACES



SANDSTONE RED



Size
600x1200mm



Finish
Matt with Forge effect



Thickness
9mm



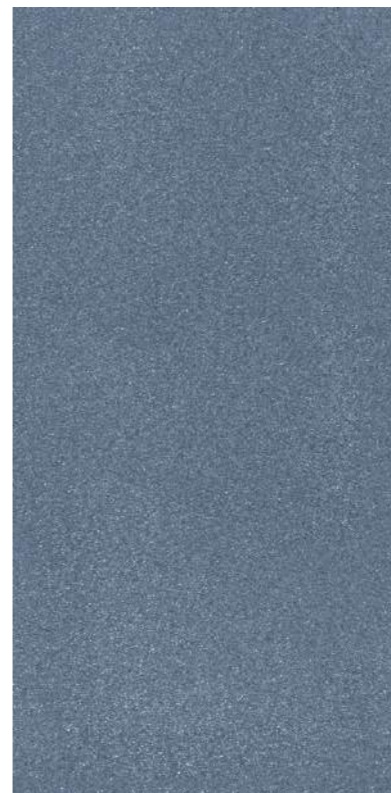
PREVIEW OF // SANDSTONE RED



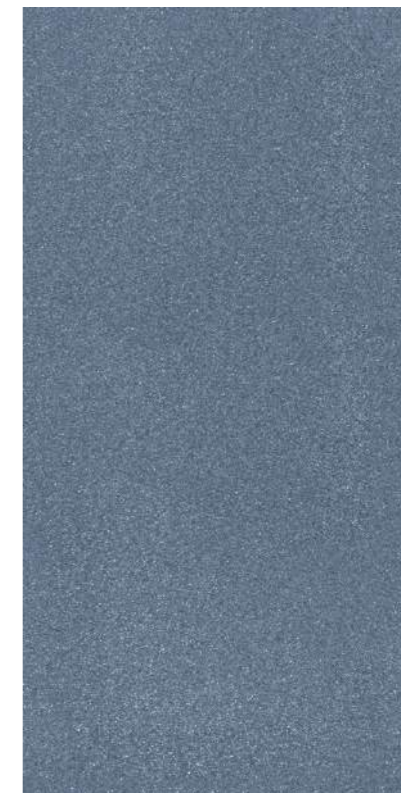
MOZILLA
EXQUISITE SURFACES



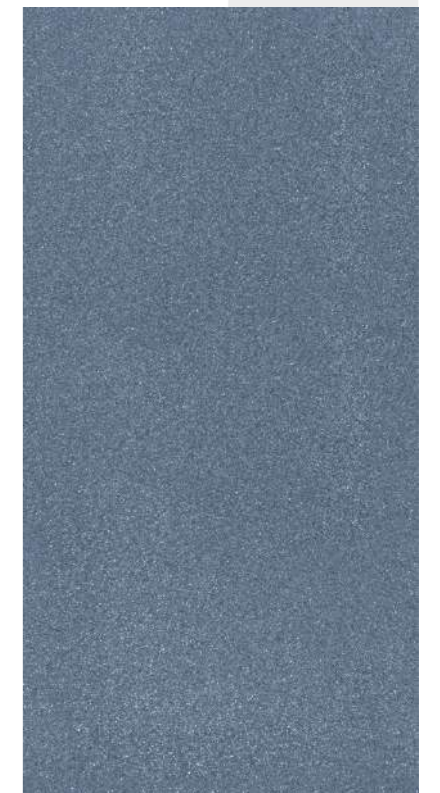
SANDSTONE BLUE



Size
600x1200mm



Finish
Matt with Forge effect



Thickness
9mm



PREVIEW OF // SANDSTONE BLUE



MOZILLA
EXQUISITE SURFACES



SUNFLORA VITRIFIED PVT LTD

SR No. 146, Opp Amardham Ashram,
Matel Road, At: Matel, MORBI- 363641

Mo.: **+91 99252 52222 | +91 97372 52222**

E-mail: sunfloravitrified@gmail.com

Visit Us: www.mozillagranito.com